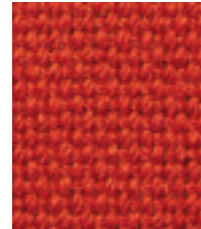
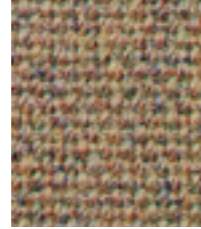


Marmalade
IF142



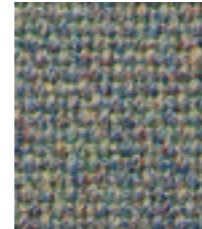
Celtic
IF120



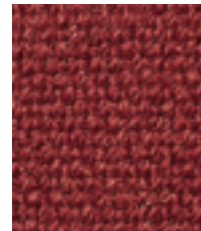
Brindle
IF056



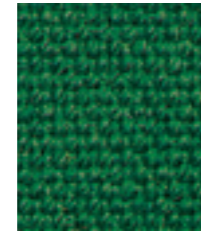
Mermaid
IF231



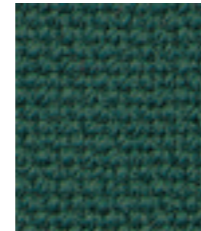
Prism
IF057



Terracotta
IF046



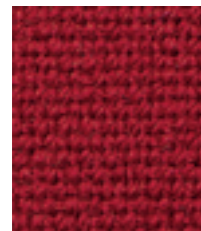
Juniper
IF084



Teal
IF240



Aquamarine
IF145



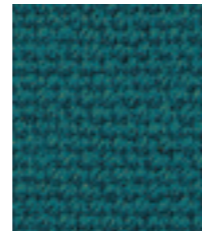
Crimson
IF116



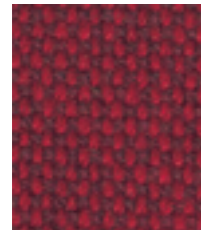
Red
IF011



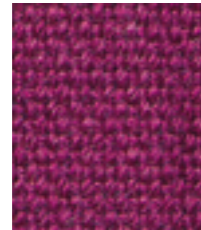
Forest
IF094



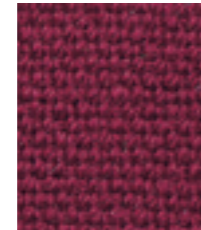
Trident



Matador
IF272



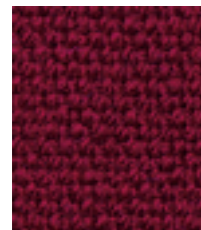
Morum
IF128



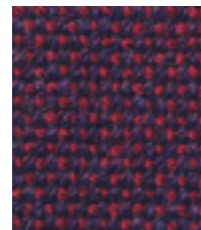
Claret
IF033



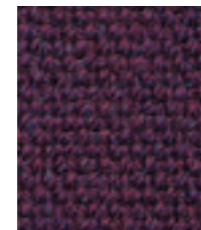
Cressida
IF112



Ruby
IF101



Wine
IF019



Bellis
IF113



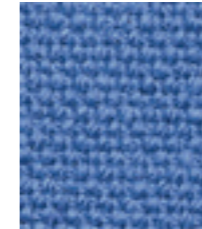
Fjord
IF083



Wedgwood
IF027



Corinth
IF089



Bluenote
IF149



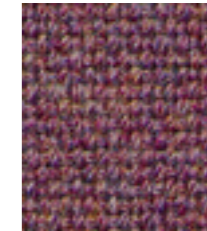
Tuscany
IF241



Lead
IF058



Clipper
IF111



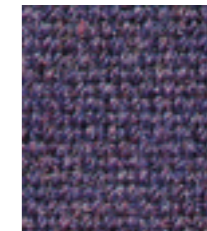
Tulip
IF237



Triumph
IF275



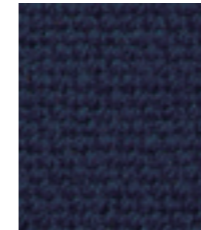
Dewberry
IF148



Penstemon
IF147



Carbon
IF252



Royal
IF020



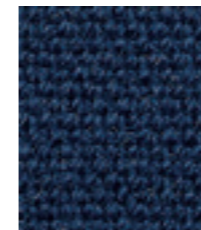
Ink
IF129



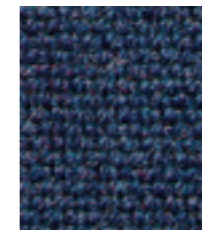
Prudence
IF250



Girder
IF276



Twilight
IF075



Mahonia
IF114



Charcoal
IF000



Black
IF059

Product information

One of the most popular seating fabrics in the Camira collection which has sold over 30 million metres since launch. Available in an extensive colour palette, this versatile plain weave fabric gives a smart appearance to most seating styles.

Objekteinrichtungen Hagemann GmbH
Singscheider Weg 15 - 45257 Essen
Telefon: 0201 / 615 88 33 33 - Telefax: 0201 / 615 88 33 34
Mobil: 0157 / 863 69 365
info@objekteinrichtungen-shop.de



Technical information

UK

Composition

67% Wool,
20% Flame Retardant Viscose
13% Viscose

Width

130cm minimum

Weight

425g/m² ±5% (550g/lin.m ±5%)

Abrasion Resistance

5 year guarantee / 75,000 Martindale cycles (full details available)

Flammability

BS EN 1021 - 1:2014 (cigarette)
BS EN 1021 - 2:2014 (match)
BS 7176:2007 Low Hazard
BS 5852:2006 Section 4 Ignition Source 5
BS 7176:2007 Medium Hazard
Note: Flammability performance is dependent on foam used.

Light Fastness

5 (ISO 105 - B02:2014)

Fastness to Rubbing

Wet: 3/4, Dry: 4 (ISO 105 - X12:2002)

Cleaning

Vacuum regularly. Professionally dry clean or wipe clean with a damp cloth.

Please note that seam performance is dependent on seam construction and needle and thread type. We recommend that appropriate sewing advice be taken.

D

Zusammensetzung

67% Schurwolle,
20% schwerentflammbare Viskose
13% Viskose

Breite

130cm nutzbare Breite

Gewicht

425g/m² ±5% (550g/lfd.M ±5%)

Scheuerfestigkeit

5 Jahre Garantie / 75,000 Martindale Scheuertouren (Details auf Anfrage)

Feuersicherung

BS EN 1021 - 1:2014 (Zigarettestest)
BS EN 1021 - 2:2014 (Streichholztest)
BS 7176:2007 Low Hazard
BS 5852:2006 Section 4 Ignition Source 5
BS 7176:2007 Medium Hazard
Bemerkung: Schwerentflammbarkeit hängt von verwendetem Schaum ab.

Lichtechtheit

5 (ISO 105 - B02:2014)

Reibechtheit

Nass: 3/4, Trocken: 4 (ISO 105 - X12:2002)

Reinigung

Regelmässig absaugen. Professionelle Trockenreinigung. Alternativ dazu mit einem feuchten Tuch abwischen.

Eine optimale Nahtausreissfestigkeit hängt von der Nahtfahne, der verwendeten Nadel und dem Näh-Garn ab. Wir empfehlen daher Nähversuche durchzuführen.

F

Composition

67% Laine,
20% Viscose retardeur de flamme
13% Viscose

Largeur

130cm minimum

Poids

425g/m² ±5% (550g/m.l ±5%)

Résistance à l'abrasion

Garantie de 5 ans / 75,000 Martindale tours (renseignements complémentaires disponibles)

Flammabilité

BS EN 1021 - 1:2014 (cigarette)
BS EN 1021 - 2:2014 (allumette)
BS 7176:2007 Low Hazard
BS 5852:2006 Section 4 Ignition Source 5
BS 7176:2007 Medium Hazard
Notez: Réaction au feu dépend de la mousse utilisée.

Solidité à la lumière

5 (ISO 105 - B02:2014)

Solidité au Frottement

Mouillé: 3/4, Sec: 4 (ISO 105 - X12:2002)

Nettoyage

Aspirer régulièrement. Nettoyage à sec professionnel. Autrement, essuyer avec un tissu humide.

Veillez noter que la performance du joint dépend de sa construction ainsi que de l'aiguille et du type de fil utilisés.

ES

Composición

67% Lana,
20% Viscosa resistente al fuego
13% Viscosa

Ancho

130cm mínimo

Peso

425g/m² ±5% (550g/lin.m ±5%)

Resistencia a la abrasión

Garantía de uso 5 años / 75,000 Martindale ciclos (más información disponible bajo consulta)

Inflamabilidad

BS EN 1021 - 1:2014 (cigarillo)
BS EN 1021 - 2:2014 (cerilla)
BS 7176:2007 Low Hazard
BS 5852:2006 Section 4 Ignition Source 5
BS 7176:2007 Medium Hazard
Condiciones ignífugas dependientes del tipo de foam utilizado.

Solidez a la luz

5 (ISO 105 - B02:2014)

Solidez al rozamiento

Húmedo: 3/4, Seco: 4 (ISO 105 - X12:2002)

Limpieza

Limpiar con aspirador con regularidad. Limpiar en seco, o bien lavar con un paño húmedo.

Tenga en cuenta que el rendimiento de la costura depende de la construcción de la costura, además de la aguja y del tipo de rosca. Le recomendamos que se aconsejen para coser la costura.